

# Floor Box

Professional Grade Perfect Finish

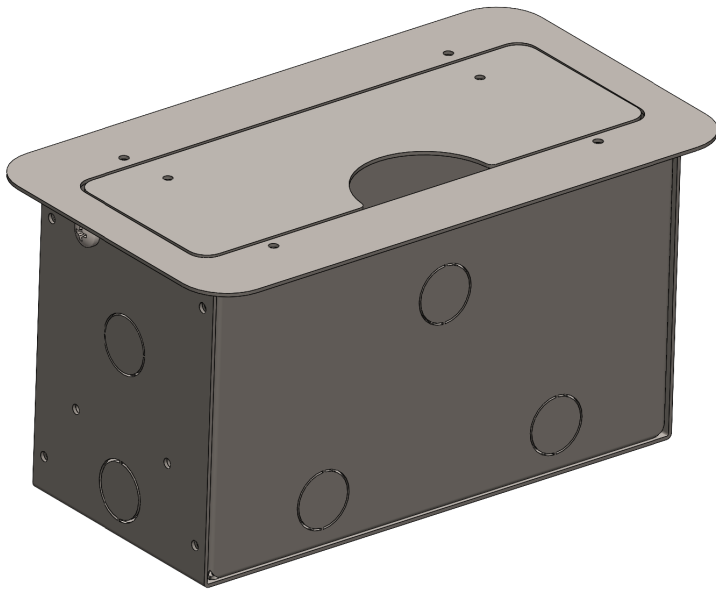
OS-FB-XLR



## Overview

The Ordain Floor Box (OS-FB-XLR) is a versatile and robust solution engineered for professional audio and stage setups. Designed to ensure seamless connectivity, this unit is available in flexible configurations with 2, 4, or 6 XLR connectors, making it the ideal interface for live events, studio sessions, and permanent installations.

Constructed from high-quality metal, the floor box is built to withstand the rigors of daily use in harsh environments. It features a sleek powder-coated finish that enhances durability while providing a professional appearance. With integrated cable management and a stable design, it ensures a clutter-free, safe, and reliable connection point for your critical audio equipment.



## Features

- **Heavy-Duty Construction:** Crafted from high-quality metal with a power coated finish to resist wear and maintain a professional look.
- **Flexible Connectivity:** Available with 2, 4, or 6 XLR connectors, each securely mounted for reliable performance and easy access.
- **Integrated Channels:** Built-in channels organize and route cables neatly to reduce tripping hazards.
- **Secure Clamps:** Equipped with clamps that hold cables firmly to prevent accidental disconnection or pull-outs.
- **Removable Panels:** Features removable access panels for quick adjustments and easy maintenance without disrupting the setup.
- **Stable & Secure:** Designed to stay firmly in place, preventing movement and ensuring a stable connection throughout recording sessions or events.

\* Pictures of Device may vary from actual models.  
\* Product Hardware / Specification are subject to change-without further notice.  
\* All Trademarks, Logos, Brands & Product name are properties of the respective owner

## Technical Specifications

Specification	Details
Model	OS-FB-XLR
Material	High-Quality Metal
Finish	Power-Coated
Colour	Black
Connector Options	2, 4, or 6 XLR
Product Weight	2.0 Kg (approx.)
Shipping Weight	3.0 Kg (approx.)
Certifications	ROHS, CE, FC

## Available Models & Dimensions

Dimension Type	Measurement
Top Plate Size	252 X 141 mm (approx.)
Floor Cut Out Required	225 X 105 mm
Floor Box Depth	131.50 mm
Internal Opening	215 X 77.7 mm



Visit us at:- [www.ordainindia.com](http://www.ordainindia.com) | E-mail: [sales@ordainindia.com](mailto:sales@ordainindia.com) or [sales@soundshine.co.in](mailto:sales@soundshine.co.in)

Head Office:- B-191, 2nd Floor, Phase-1, Naraina Industrial Area, New Delhi-110028 | Marketing By:- Soundshine Projects Private Limited

## Dimension

